

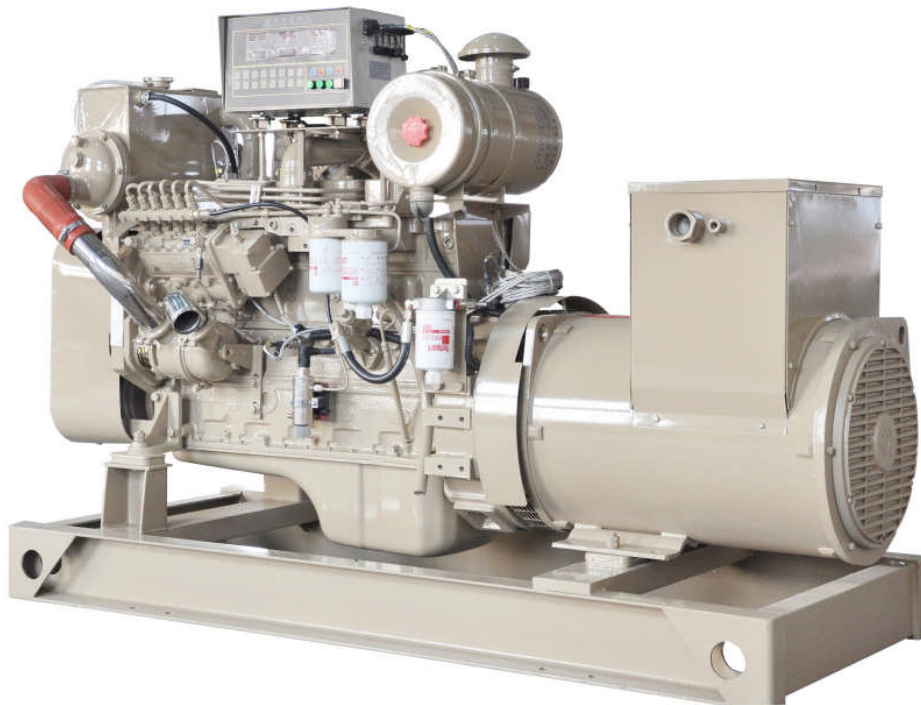


**Etone Power Co.,Ltd.**

<http://www.etonepower.com>

**Model : ETCJC120**

**Generating set Technical Data Sheet**



**NO:ETCJC120**

© 2012 copy right at Etone Power Co.,Ltd.

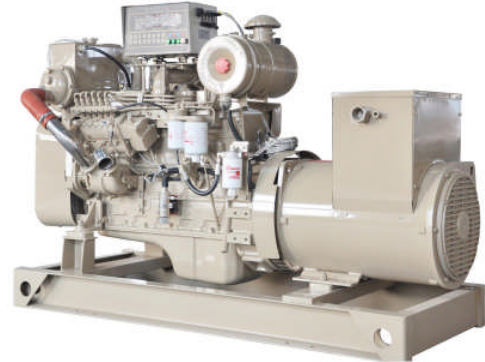
**ISO9001:2008**



## STANDARD SPECIFICATION

### General features:

- Coupled with Cummins diesel engine and Marathon alternator
- 24V DC start motor
- Brushless, Self-excited, IP23, insulation class H alternator



### Genset Main Technical Data

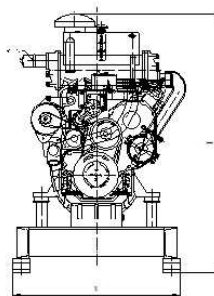
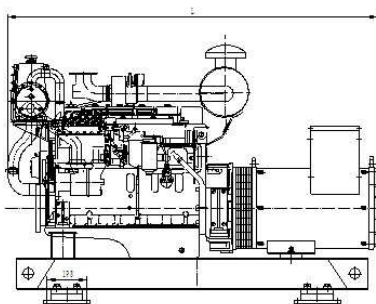
**3-PH, 50Hz@1500RPM, 400/230V** (Also Can Be Made According To Customers' Special Requirements)

Voltage	HZ	Phase	PF ( $\text{COS } \phi$ )	Output (KW)
400/230V	50	3	0.8	120

## Criterion

- GB/T13032-1991
- ISO9001:2008 Quality Control System
- CCS approved

## Dimension and Weight



### Open Type

Overall size (L\*W\*H)

2100x800x1360

Weight:1750kg

## ENGINE SPECIFICATION

### Cummins Diesel Engine

#### Technical Data

Engine Model	6CTA8.3-GM155
Number of Cylinders	6 cylinders in line
Cycle	4 stroke

Aspiration	Turbocharged and aftercooled
Bore×Stroke	114x 135 mm
Displacement	8.3 L
Prime Power/Speed	155KW /1500 rpm
Speed Governor	electrical
Cooling System	By heat exchanger
Fuel Consumption at 100% Load	212 g/kw.h
Starter Motor	DC24V,


## Alternator SPECIFICATION

### Marathon Alternator (Standard)

#### Technical Data

Alternator Model	MP-H-120-4
Prime power	120KW
Frequency/speed	50HZ/1500rpm
Exciter type	Brushless, Self-excited
Power factor	0.8
Insulation Grade	H
Protection Grade	IP23
Phase / wire	3 phase 4 wires

## Control System

Model	MFKC200AG
<ul style="list-style-type: none"> <li>* Microcomputer digital control, and reliable work;</li> <li>* Digital display of parameters of diesel engine, and integration of measuring and monitoring;</li> <li>* Modularization of functional configuration, and ntegration of product structures;</li> <li>* Resistance to vibration, humidity, salt mist and high/low temperature;</li> <li>* Powerful ability to resist interference, convenient installation and use, and high performance-price ratio;</li> <li>* Remote monitoring of running parameters;</li> <li>* Automatic zero set of lubricating oil pressure</li> <li>* Accumulation of running period of diesel engine.</li> </ul>	
	

## Supply documents

<b>a. Alternator</b> operation and maintenance manual CCS certificate	1PC 1PC
<b>b. Engine</b> operation and maintenance manual CCS certificate Nox certificate	1PC 1PC 1PC
<b>c. Generator</b> CCS certificate Overall drawings of the set ELECTRINIC SYSTEM DRAWING Bench test Packing list	1PC 1PC 1PC 1PC 1PC
<b>d. Control panel</b> CCS certificate operation and maintenance manual	1PC 1PC

## Picture of packing



**Etone Power Co.,Ltd.**